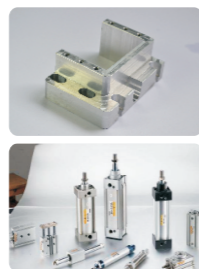


► 应用领域 Fields of Applications

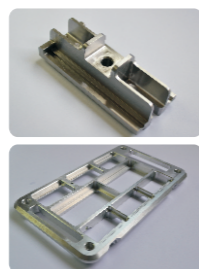
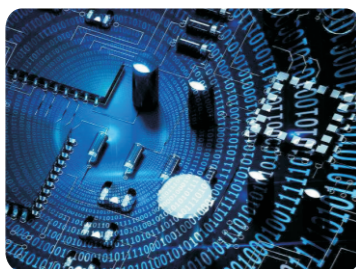


精密五金零件

我公司精雕机、雕铣机系列产品，具有刚性高、稳定性好、加工震动小、重现精度高优势，可同时满足半精加工与曲面精加工，广泛应用于精密零件加工以及特定航空零件加工。在金属与非金属零件加工领域，我们积累了大量的加工经验。我公司产品设备占地面积小，易于组建自动化生产线，依靠强大的售后服务与优良的品质赢得越来越多客户的青睐。

Precision hardware and parts

The engraving and milling series machines manufactured by our company feature high rigidity, favorable stability, small processing vibration, and high accuracy of repetition, for which they are qualified for semi-finishing and surface finishing and have been widely applied to precision part machining and special aeronautical part machining. We have accumulated considerable experience in metal and non-metal part machining. The products our company provides are smaller in size and easy to build the automatic production line. With powerful after-sale services and excellent quality, they have been favored by an increasing number of customers.

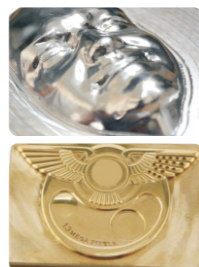
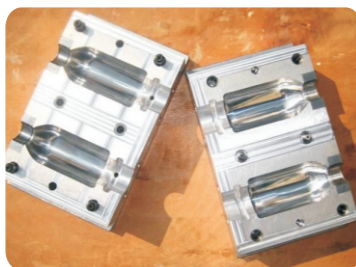


3C电子行业

随着中国智造智能化产业进程的广泛推进，精密电子类产品精密元件配套件的加工需求陡增。我公司机床产品在传感器壳体、ECU外壳等产品领域有着广泛的应用。占地小、加工效率高、领先的无故障运行时间保障了终端客户的生产效益。

3C Electronics industry

With the promotion of the cause of wisdom in China, there are increasing demands on the processing of precision parts for precision electronics. The machine tool products our company provides have been widely used in various fields like sensor housing and ECU cover. Small size, high processing efficiency and excellent non-failure operation time have ensured the production effectiveness of our customers.

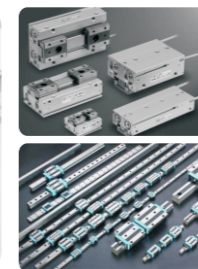
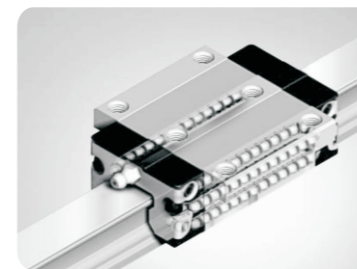


小型模具铜电极加工

在传统的模具加工领域，我公司PB/PQ系列机床产品，凭借着同类品中超高的机床刚性、领先的数控技术、可观的性价比，在机床可靠性、切削效率与产品光洁度方面深受客户认可，大幅度降低了模具类产品客户的机床投入。

Small mold, copper electrode processing

In terms of traditional mold processing, the PB/PQ series products of our company have been widely acknowledged by our customers due to their super machine tool rigidity compared with similar products, advanced CNC technology, impressive cost performance, high machine tool reliability, cutting efficiency and product finish. Our products will help customers substantially reduce expenses in mold-related machine tools.



导轨滑块球道磨削加工

工业自动化突飞猛进的今天，直线传动自动化分类中的精密磨削机床需求量日益增加。我公司机床产品PQM系列，可用于微型直线导轨滑块的球道磨削、玻璃面板磨削、微型精密零件的曲面磨削等领域。

Guide rail and sliderball track grinding

Rapid advancement of industrial automation comes along with the increasing demands on precision grinding machines in linear transmission automation. The PQM machine tool series our company provides can be used in a variety of fields, including micro-linear guide rail and slider ball tracking grinding, glass panel grinding, and micro-precision part surface grinding.

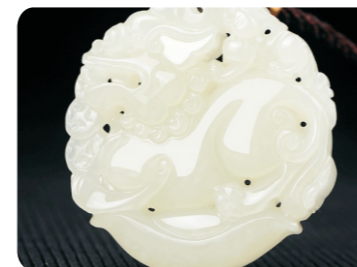


高光倒角加工

我公司高光倒角机广泛应用于手机外壳、数码产品外壳的高光精加工、倒角加工领域。PQD系列机床产品，凭借着刚性高、加工震动小、重复精度高优势，越来越多的被行业客户选用。

High-gloss chamfering

The high-gloss chamfering processing machines our company provides have been widely applied to various fields like high-gloss finishing of cellphone and digital product casings and chamfering. In particular, PQD products have been more and more widely recognized by customers owing to their high rigidity, small processing vibration, and high accuracy of repetition, etc.



高端工艺品制造

高端工艺品制造行业，原材料价格高，加工费时，对机床的稳定性要求极高。在过去几年的客户反馈中，我公司机床产品可应用于高端木器精雕、玉石类雕刻等工艺品的制造，深受客户好评。

High-end artware manufacturing

High-end artware manufacturing features high costs raw materials, time consuming, and high requirements for machine tool stability. Over the past few years, customer feedback suggests that our machine tools can be used for artware manufacturing, such as high-end woodware carving and jade carving.